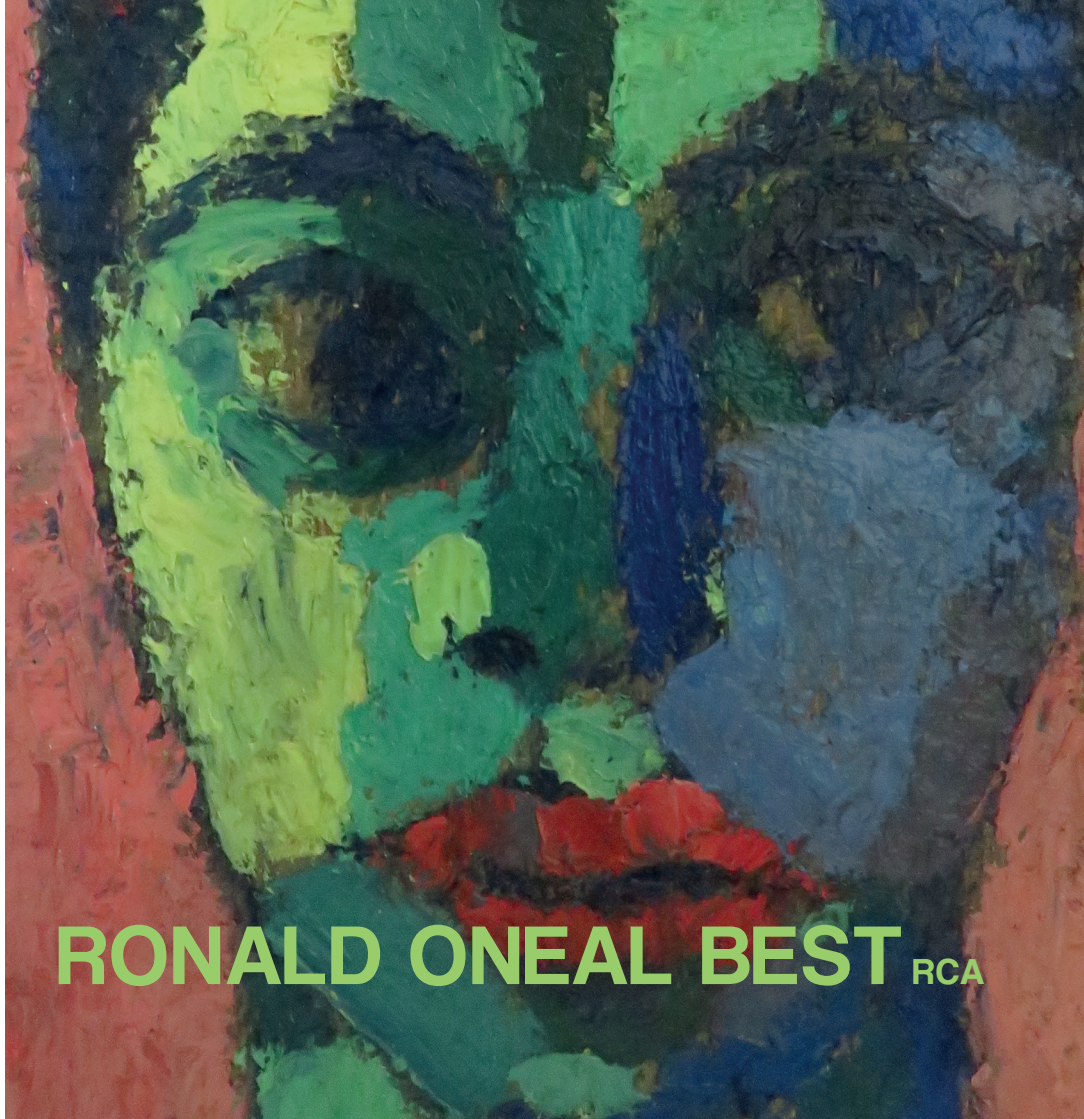
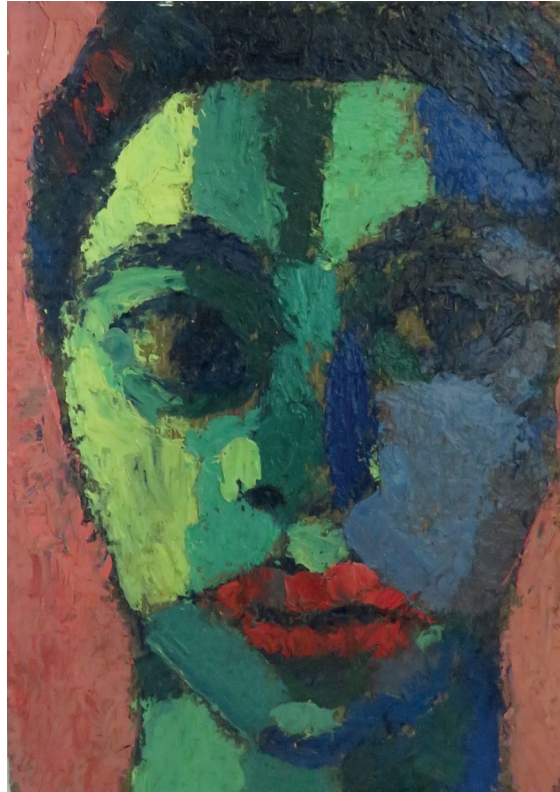


THE PROCESS

1979 - 2022

RONALD ONEAL BEST RCA





COVER DETAIL FROM PORTRAIT OF A YOUNG MAN 2003

OIL ON LINO

13CM X 18CM

FORWARD

Ron O'Neal Best is a classically trained post modern artist and teacher and has exhibited widely. His studies began at Byam Shaw School of Art in 1975, continued at Southwark College in 1982-1983 and Croydon College 1983-1987. Ronald went on to study at the Royal College of Art 1988-1990. He has taught at Heatherleys since 1997 following a short stint as a student in the Open Studios with John Walton.

His work is painterly and explores the boundaries between the figure and abstraction. It embodies the human form and his creativity experiments with the intersection between printmaking and painting. Ronald's line and shade is sublime and brings the eye into a more sensitive and intimate relationship with the movement of the human figure. In essence he is always seeking to and continuously questions the narrative. His style sometimes employs collage assemblage, montage etcetera and his aesthetic invites the audience to illicit their own conclusions from his pieces.

His works challenges ideas on image and the spectacle continues to experiment with contemporary new realities.

Joy May



PORTRAIT OF A YOUNG MAN 2014
OIL ON CANVAS BOARD
40CM X 50CM



PORTRAIT OF A MAN 2019
MONOPRINT
29CM X 37CM



HEAD 2014
OIL ON CANVAS BOARD
30CM X 40CM



FACE 2016
MIXED MEDIA ON CANVAS
52CM X 62CM
7

RECLINING NUDE 2022
ACRYLIC ON CANVAS
51CM X 41CM





UNTITLED 1980
MIXED MEDIA ON BOARD
52CM X 54CM



UNTITLED 1980
MIXED MEDIA ON BOARD
52CM X 54CM



UNTITLED 1980
MIXED MEDIA ON BOARD
32CM X 44CM

LOCKDOWN PAINTING No 4 2020
MIXED MEDIA ON CANVAS
45CM X 61CM





LOCKDOWN PAINTING No 2 2020

MIXED MEDIA ON CANVAS

45CM X 61CM

14

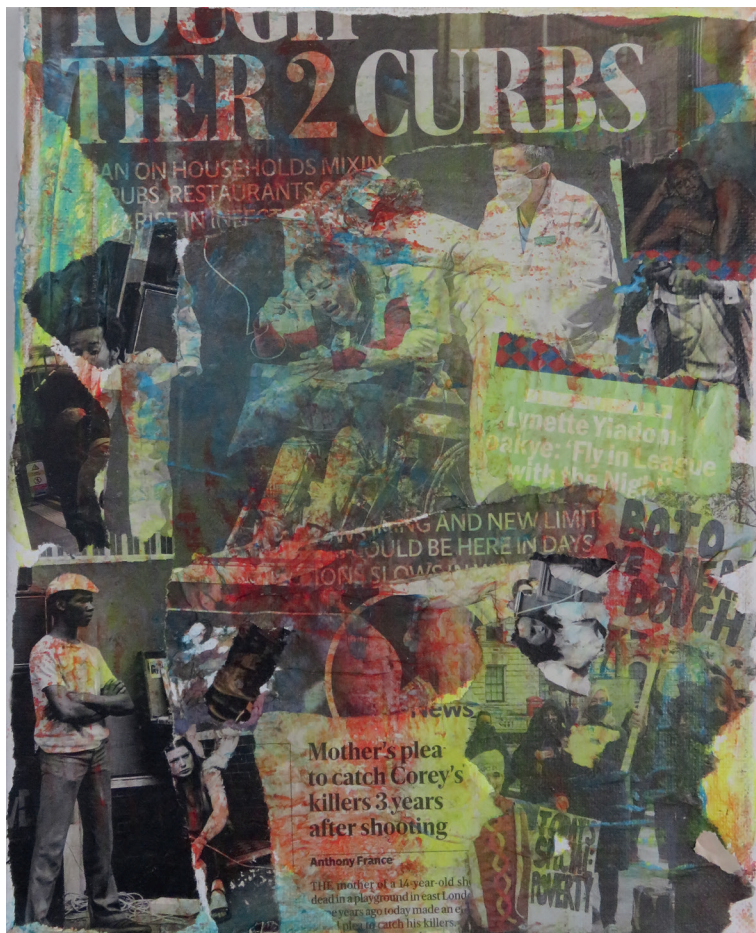


LOCKDOWN PAINTING No 1 2020

MIXED MEDIA ON CANVAS

45CM X 61CM

15



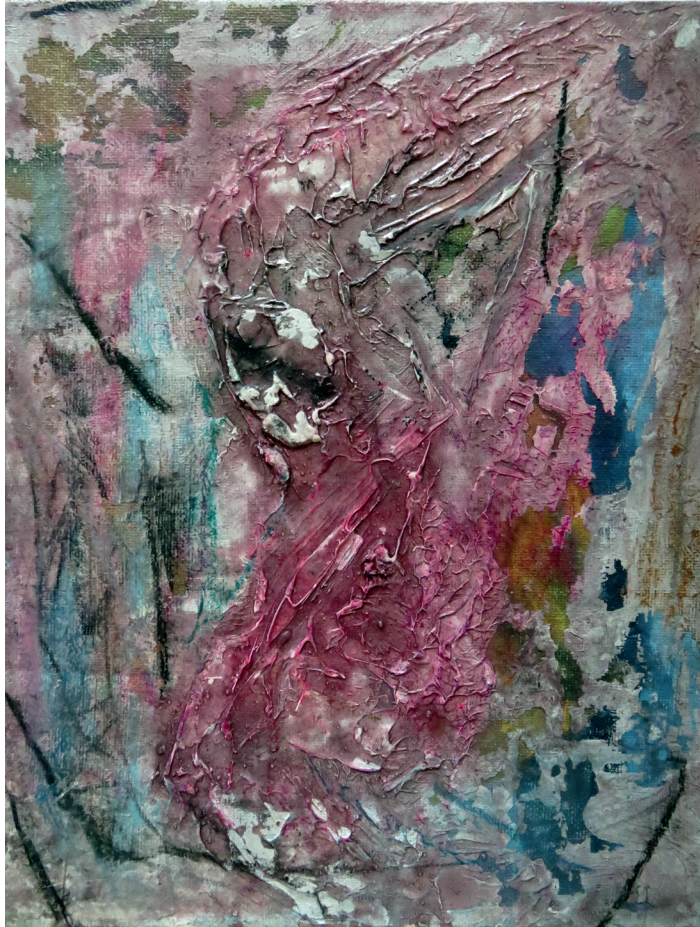
LOCKDOWN PAINTING No 7
2020
MIXED MEDIA ON CANVAS
21CM X 25CM



UNTITLED 2019
MIXED MEDIA ON CANVAS
26CM X 30CM



UNTITLED 2018
OIL ON CANVAS
26CM X 30CM



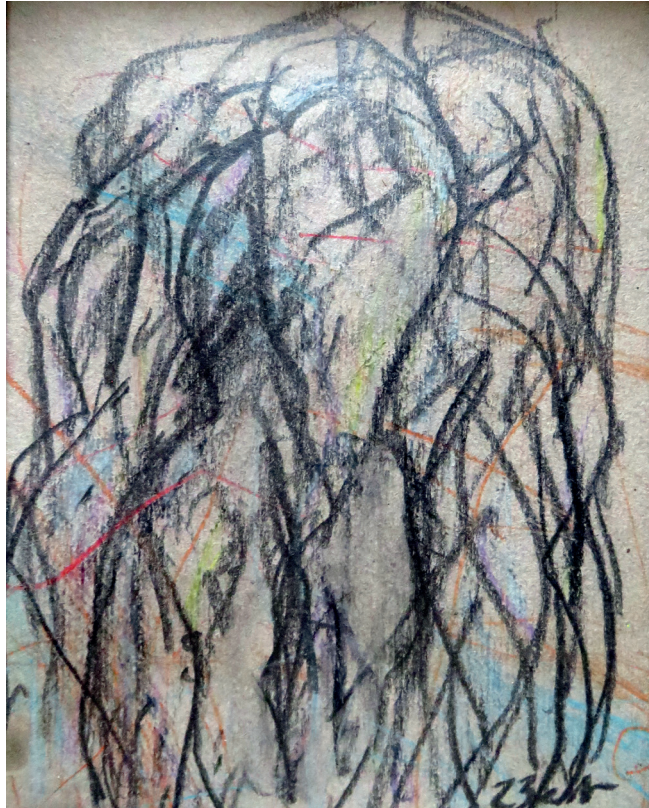
UNTITLED 2018
MIXED MEDIA ON CANVAS
26CM X 30CM



TWO FIGURES LOCKDOWN PAINTING, No 5 2020
MIXED MEDIA ON CANVAS
45CM X 61CM

FAMILY GROUP 2019
OIL ON CANVAS
41CM X 51CM





FIGURES 2016
MIXED MEDIA ON CARD
25CM X 30CM
22



STUDY OF FIVE FIGURES 2022
CHARCOAL ON CANVAS
36CM X 46CM



RECLINING NUDE 2022
OIL ON BOARD
97CM X 78CM



TWO FIGURES 2018
MIXED MEDIA ON BOARD
15CM X 20CM



FAMILY GROUP 1999

DRYPOINT

54CM X 64CM

27



OUT OF THE DARKNESS 1999
DRYPOINT
44CM X 58CM

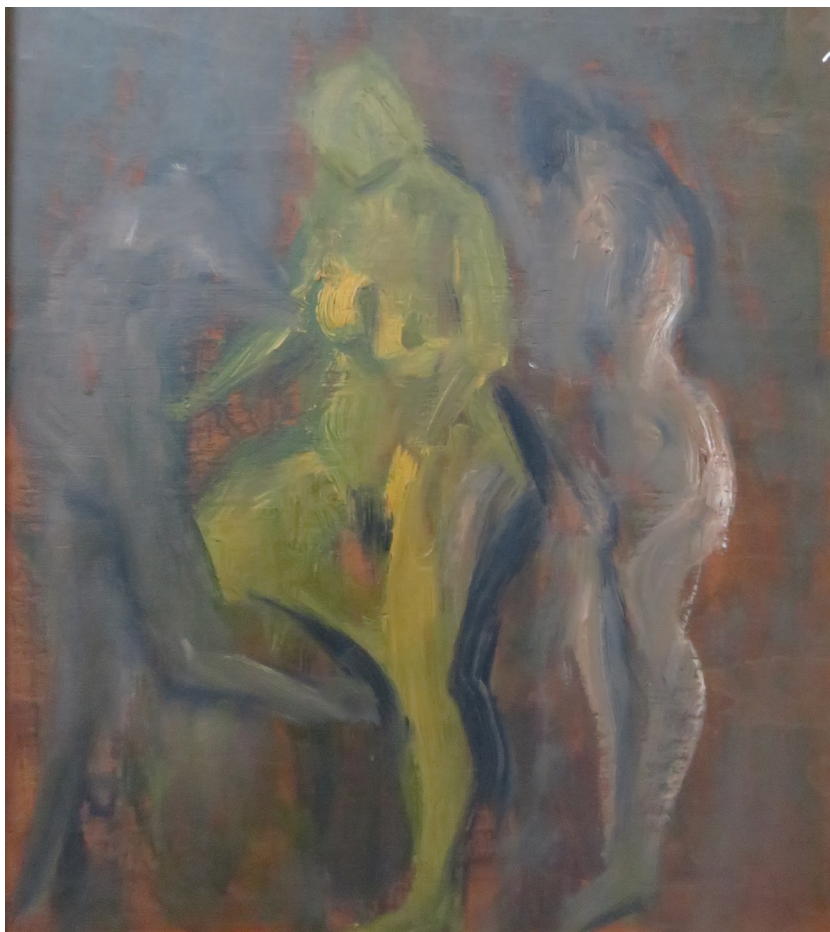


THE UNFAITHFUL 1999
MONOPRINT
33CM X 43CM

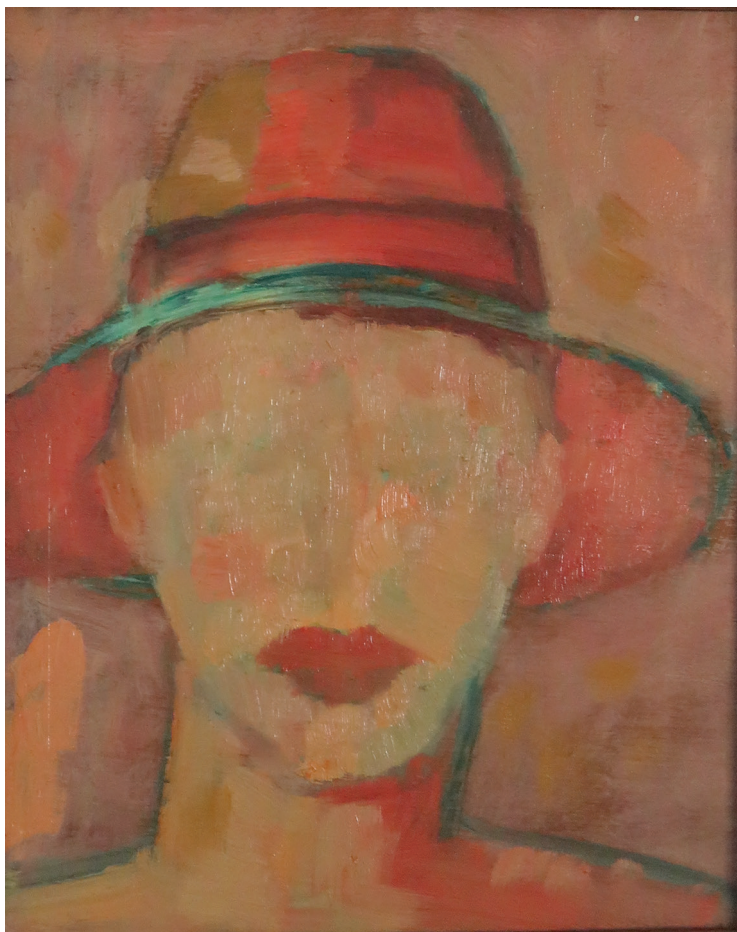


FAMILY 1999
MONOPRINT
38CM X 48CM

27



THREE FIGURES 2001
OIL ON CANVAS
35CM X 43CM



PORTRAIT OF A WOMAN
1996
OIL ON PANEL
29CM X 33CM



LOCKDOWN PAINTING No 6
2020
OIL ON CANVAS
21CM X 26CM



A STANDING FIGURE 2016
ACRYLIC ON CARD
28CM X 35CM

THREE FIGURES 2016
OIL ON CANVAS BOARD
50CM X 60CM





PORTOBELLO BATHER 2016
OIL ON CANVAS BOARD
30CM X 30CM



FAMILY GROUP 2017
OIL ON BOARD
25CM X 30CM



UNTITLED 2017
MIXED MEDIA ON BOARD
37CM X 48CM

CV

EMPLOYMENT

Printmaking Lecturer, Heatherley School of Art	1997 - Present Day
Printmaking Lecturer, Hampstead School of Art	2023
Community Art Workshops, Westway Trust	2022 - 2023
Founder - Portobello Drawing Academy	1997
Founder - Notting Hill Visual Arts Festival	2005
Curator - Portobello Art Gallery for Westway Development Trust (voluntary)	2011 - 2012
Hillside Drawing Workshops	2010
Visiting Painting Tutor, Kensington & Chelsea College of Further Education	1994

STUDY

Artist In Residence (Unofficial) Wembley Point	Jan - June 2009
Abstract Painting, Hampstead School Of Art, Part Time	2008 - 2012
Royal College Of Art, Tutored By Alistair Grant / Terry Frost RA / John Hoyland	1988 - 1990
Artist In Residence, Grange Museum	1988
Artist In Residence, Essendine Centre	1987 - 1988
Croyden College, Tutored By Bruce Mclean / Gerald Marks / Aubrey Williams	1983 - 1987
Southwark College	1982 - 1983
Byam Shaw School Of Art	1981 - 1982
Various art colleges evening & part time courses	1977 - 1980
Byam Shaw School Of Art	1975 - 1976

EXHIBITIONS

GROUP SHOWS

Portobello Group Of Artists, JM Gallery, London 2019
Five Artists From Acava, West Eleven Gallery, London 2018
Heatherleys Bankside Staff Show, Bankside Gallery 2014 - 2019
Notting Hill Visual Arts Festival, Various London Galleries 2005 - 2018
Chelsea Printmakers, West Eleven Gallery 2005
Portobello Group Of Artists, Notting Hill Fine Art Gallery 2004
Earls Court Festival, Troubadour Gallery 2003
Gallery Café Portobello Group 1999
Gallery Café, Heatherley's Tutors & Students 1998
Riverside Studio & Gallery 1997
Heatherleys 150 Years Students & Tutors, The Mall Galleries 1996
London Print Workshop 1996
Acava Open Studios, London 1996
Pall Mall Deposit, London 1994
Art House, Belgium 1994
Argile Gallery, London 1993
The Portobello Group, Pall Mall Deposit Gallery, London 1993
The Flower Gallery, London 1991
The Portobello Print Open, Metro Gallery 1990
The Portobello Open, London 1990
The Second Irish Mini Print Exhibition, Dublin 1990

EXHIBITIONS

GROUP SHOWS CONT.

The London Group, RCA 1989

Anderson O'day Gallery, London 1988

Pomeroy Purdy Gallery, London 1988

Young Contemporaries, Whitworth Gallery, Manchester 1987

Salon Des National, Paris 1985

ONE MAN SHOWS

Westbourne Gallery, London 1987

Grange Museum, London 1988

Camden Arts Centre, London 1988

L'escargot Restaurant, London 1990

Clare Lloyd Contemporary Arts, Argile Gallery, London 1996

Notting Hill Fine Art, London 2001

Hampstead School Of Art, London 2019

Heatherleys School Of Fine Art, 2023

WORKS IN COLLECTIONS

Royal College Of Art

Croyden College

Grange Museum, London

Various UK And International Private Collections

Heatherleys School of Fine Art Gallery
13th February - 24th February, 2023

The Process:
RONALD O'NEAL BEST RCA Paintings

My paintings, drawings and prints depict both figurative and abstract form. I focus more on the figure with the nude as my main subject. I introduced new media into my work, incorporating layers and texture using collage and other materials. The compositions in some pieces play with proportion and geometrical shapes. This will be my first solo show at Heatherley School of Fine Art.

Private View
Wednesday 15 February, 2023
6pm - 8pm

Thanks to James MacDonald and Clovissa Newcombe for the loan of works from their private collections and their continued support.



First published in Great Britain in 2023 by the Artist.

The Heatherley School of Fine Art,
75 Lots Road, Chelsea, London
SW10 0RN

T: +44 (0) 20 7351 4190

E: info@heatherleys.org

All rights reserved. No part of this publication may be produced or transmitted in any form by any means without prior permission in writing from the publisher and the artist.

Burne Jones, Rossetti, Millais, Lord Leighton, Kate Greenaway, Flint, Michael Ayrton, Franz Kline, Laura Herford, Evelyn Waugh, Lady Butler, E.H. Shepard and Emily Mary Osborn and Walter Sickert are numbered amongst its former students as was the first Principal of the Slade School of Art, Sir Edmund Poynter and an early Principal of the Royal College of Art, Walter Crane.

The Heatherley School of Fine Art was the first school to admit women to the life room on equal terms with men.

In 1845, a group of students of the Government School of Design in Somerset House, unable to tolerate any longer the academic restrictions imposed on them, began to work as a separate class in Dickenson's Drawing Gallery, 18 Maddox Street. In 1848 Dickenson's became Leigh's and moved to Newman Street with James Matthews Leigh as Principal. When he retired, his pupil and assistant Thomas J. Heatherley took over the school and ran it for nearly 30 years without a break.

HEATHERLEYS

ENQUIRIES

INFO@NOTTINGHILLVISUALARTS.COM

07496611991

W11 LONDON